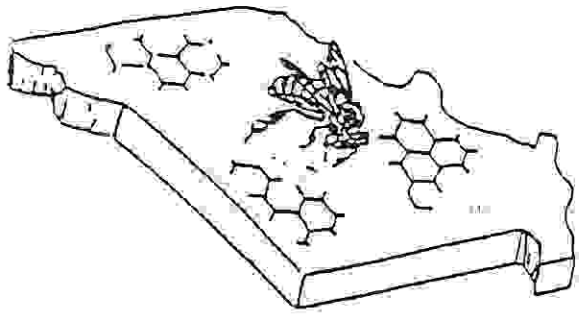


June 1996

MISSOURI STATE BEEKEEPERS ASSOCIATION



PRESIDENT Neal Bergman P. O. box 591 Kennett, MO 63875 (314) 888-2465	VICE PRESIDENT Dan Adams Rt. 10 Box 1157 Springfield, MO 65803 (417)833-4125	TREASURER Ron Vivian P.O. Box 448 Oak Grove, MO 64075 (816)690-7516
SECRETARY Don Moore 15 Kathryn Dr. St. James, MO 65559 (314) 265-8706	PROGRAM CHAIRMAN Larry Hensley 13520 Old Jamestown Rd. Florissant, MO 63033 (314)355-6935	EDITOR Jim Tharter Rt. 4, Box 60E Moberly, MO 65270 (816)263-2694

Ray Nabors, University of Missouri Apiculture Specialist, Rt 3, Portageville, MO 63873, (573)333-0258

June 1996

PRESIDENT'S PAGE

Boy, am I glad this spring is over!! When I last wrote, we were getting into spring work; it seems as though it took forever. I am optimistic about the year, but we sure had to put a lot of effort into it. I heard a lot of people had a hard time getting their counts up. Several people I've talked to were looking for bees and brood - maybe they found them. Hope this wasn't you. We still haven't had the warm weather that we normally have - those warm nights for raising bees, I'm sure we won't miss them.

Sounds like the honey market is staying pretty strong; what an opportunity, if we can get a crop!!!

Now that we have these things taken care of, we need to look forward to the Missouri State Fair. Yes, it's that time again. Below, I have a sheet for signing up for working at the state fair. We discussed earlier in the year about locals taking a section of the fair to work. Following my letter will be a form you can fill out and return to me as to when you can work. The association's success depends on your participation. Remember, we do have some rooms available. As an incentive to work, Kelly and I will donate one night's lodging and registration for the American Honey Producers meeting in Memphis in January. Every day you work we'll put your name in a hat, and at the Fall meeting we'll announce the winner. Thank you in advance for your continued support. See you at the fair.

Extender Patty Directions

To administer Terramycin in an extender patty, mix Terramycin Soluble Powder and vegetable shortening/powdered sugar into patties using the amounts shown in Table 3 for the number of colonies you will be treating. Place the patties on the top bars of the brood nest frames.

Because Terramycin 100-D has such a high concentration of oxytetracycline, an intermediate mixture of Terramycin 100-D and powdered sugar must be prepared (see Table 3). This intermediate mixture contains approximately 200 mg of oxytetracycline hydrochloride activity per ounce. It should be combined with the shortening and remaining powdered sugar at the rate of 4 oz per 165 g of vegetable shortening and 330 g of sugar. Place the patties on the top bars of the brood nest frames.

Table 3
Extender Patty Dosage Guide

Terramycin Soluble Powder # packs (6.4 oz)		Vegetable shortening (lb)		Powdered sugar (lb)		Colonies treated (1 lb/colony)
1	+	4.56	+	9.12		14
2	+	9.12	+	18.24		28
3	+	13.68	+	27.36		42
4	+	18.24	+	36.48		56
5	+	22.80	+	45.60		70
Terramycin 100-D (TM 100-D/powdered sugar) (lb/lb)		Vegetable shortening (lb)		Powdered sugar (lb)		Colonies treated (1.3 lb/colony)
0.875/25	+	37.62	+	75.25		103
1.75/50	+	75.25	+	150.50		207
3.50/100	+	150.50	+	301.00		414
5.25/150	+	225.75	+	451.50		621
7.00/200	+	301.00	+	602.00		828
8.75/250	+	376.25	+	752.50		1035

Warnings and Cautions

Since Terramycin 100-D is so highly concentrated, make sure the drug is thoroughly mixed with the other ingredients. If you do not have the proper equipment to mix large batches of medication, prepare smaller batches. Less than thorough mixing will yield a product that does not medicate all colonies evenly. All mixtures of Terramycin should be