

Missouri State Beekeepers Association  
 P.O. Box 448 Oak Grove, MO 64075  
[www.mostatebeekeepers.org](http://www.mostatebeekeepers.org)

March 2007

Eugene Makovec  
 Editor

## Kick Off Spring Meeting With Capitol Tour

### Exclusive dome tour to be led by Senator Clemens

Please join us for our Spring Meeting on Friday and Saturday, March 16-17 in Jefferson City, MO. We have an exciting agenda planned and we hope that all of our members will attend. Remember, communication and learning are the keys to successful beekeeping.

In addition to the two-day agenda detailed on pages 6-7, early arrivals can accompany us on a special tour of our beautiful state Capitol building on Friday morning. We will leave the hotel in two groups, at 8:45 and 9:05, for an hour-long tour led by Capitol staff.

Following this, we are in for a real treat, as Senator Dan Clemens, R-Marshfield, Chairman of the Agriculture, Conservation, Parks and Natural Resources Committee, will lead us upstairs for a rare tour of the Capitol Dome. This will include a walk around the outside of the dome.

Keep in mind that there are 250 steps to the top of the dome, but there is an elevator that goes to the halfway point.

If you have not yet made hotel reservations, you will no longer be able to receive our group rate at the Capitol Plaza. A map of the immediate area, including hotels, is located on page 12 of this newsletter (for email subscribers), or is available from the Jefferson City Convention and Visitors Bureau, at 573-632-2820 or [www.visitjeffersoncity.com](http://www.visitjeffersoncity.com).



*This is one small area of a huge mural of 19th Century Missouri life on display in the Missouri State Capitol. Painted by renowned artist Thomas Hart Benton, it is one of the attractions to be seen on the Capitol tour.*

*photo by Eugene Makovec*



Our featured speaker is **Dr. Keith Delaplane** (at left), a professor in the Department of Entomology at the University of Georgia in Athens. He is Senior Editor of *The Journal of Agricultural Research*, and has written several books, including *"Honeybees and Beekeeping — a Year in the Life of an Apiary"*. Keith is fascinated with state capitols, and has agreed to come to our meeting because we are meeting in Jefferson City.

We also are featuring a hands-on session in Apitherapy, conducted by **Reyah Carlson**. Reyah is Secretary of the American Apitherapy Society. She recently returned from India where she taught apitherapy (story on page 4). In January 2007, she gave a program at the American Beekeeping Convention, and the year before she spoke to the American Honey Producers. She has also been featured on the Discovery Channel and the National Geographic Channel.

Reyah makes her home in Bruner, MO, and her website is [www.reyahsbeesness.com](http://www.reyahsbeesness.com). She will speak on the medicinal and nutritional qualities of all honeybee made products. She will also demonstrate sting technique.

#### Other Speakers

**Andy Cutter** is Sales Manager for Jost Chemical in St. Louis.

**Dr. Wes Stricker** is a Columbia physician whose practice specializes in allergies, especially to stinging insect venom.

Several members of our Association will also be speaking and/or assisting in demonstrations. These include **Rev. Grant Gillard** from the Parkland Beekeepers, **Jann Amos, Carol and Bob Wade, Robert Speradio** from Beekeepers of the Ozarks, and **Chris Gibbons**.

All meeting questions can be directed to Sharon Gibbons at [sgibbs314@earthlink.net](mailto:sgibbs314@earthlink.net) or 636-394-5395.

#### INSIDE THIS ISSUE:

<b>From the President</b> <i>Ken Norman</i>	2	<b>Spring Meeting Agenda</b>	6-7
<b>SHB in Bumblebees</b>	3	<b>New Gasconade Co. Club</b>	9
<b>Preserving Historic ABJs</b>	3	<b>Local Club Information</b>	9
<b>Apitherapy News</b> <i>Reyah Carlson treats MS in India</i>	4	<b>Membership Application</b> <i>Have you renewed for 2007?</i>	10
<b>Register for Spring Meeting</b> <i>Time is getting short</i>	5	<b>2007 Honey Queen</b> <i>Congrats to Lori Guthals</i>	11



## From the President by Ken Norman

Hello Missouri beekeepers,

I would like to thank all the new beekeepers that have chosen to enrich their beekeeping experience by joining the Missouri State Beekeepers Association. The Association will do all it can to aid you in your beekeeping experience. At any time you can contact the officers or members with any questions or suggestions you might have. I hope to see all the Missouri State beekeepers in Jefferson City at the Spring meeting in March.

After contemplating on the porch with Todd the dog, I have decided to look at one of the tools of beekeeping, the infamous smoker. After looking at the research on the effects of using smoke on bees, I have decided it would be good to understand the effect it has on bees so a beekeeper can maximize the use of this tool.

When using a smoker, always practice caution as you would with any device that produces heat and flame.

1. When you first approach a hive entrance, smoke any opening that a bee could fly out of using five or six puffs of smoke.

Using research from the Department of Entomology of Illinois, we see that the ability of the honeybee to perceive the alarm odor is diminished by smoke.<sup>1</sup> The smoke clogs up the antennae of the honeybee, which slows the perception of any alarm odors put forth by the guard bees in the entrance, and then causes a series of events to happen in the hive. The first event is that the guard bees are reduced in numbers at the entrance of the hive because many of them are headed for the honeycomb to fill up on honey. Then the rest of the hive engorges on honey in preparation of flying away from danger. The smoke then makes it more difficult for the other bees to perceive the intruder by odor because the alarm odor cannot pass through the clogged antennae.<sup>2</sup>

2. Use a hive tool to crack the lid and apply three or four puffs of smoke. Remove lid and inner cover and direct a few puffs between the frames.
3. When you notice the bees are lining up to stare at you, it is time for a few more puffs

The effect of smoke lasts about 10 to 15 minutes in blocking the alarm odor, and must be reapplied to keep the bees in the dark about any intruder at the hive.<sup>3</sup>

This tool of the beekeeper stops the recruitment of more guard bees because their antennae are clogged and the alarm odor is not sent out or it is masked. Smoke makes it more difficult for the bees to locate the beekeeper by odor and finally the bees become engorged with honey and are less likely to sting.

<sup>1</sup>Journal of Insect Behavior, Vol. 8, No. 1, 1995

### Alarm Pheromone Perception in Honey Bees Is Decreased by Smoke (Hymenoptera: Apidae)

P. Kirk Visscher, I Richard S. Vetter, I and Gene E. Robinson 2

Accepted May 27, 1994; revised June 20, 1994

<sup>2</sup> Ibid

<sup>3</sup> Ibid

**Email Subscribers:** We will once again be conducting a drawing for a free one-year MSBA membership. Our email subscribers save the Association considerable time and money on the printing and mailing of newsletters, and this is our way of showing our appreciation. So if you're not currently receiving your newsletter via email, please contact the editor and become eligible for our next drawing, to be held at the Spring meeting in Jefferson City. (You need not be present to win.)

Four frame **Overwintered Nucs**, transferred into your equipment, about May 15.

**No Frame Exchange.** 10% deposit required. \$70.00

**Locally raised**, gentle, productive **Queens**. After May 30, weather permitting.

10% Deposit required. Orders must be picked up at my home in Dittmer, MO.

Bob Graham 636-274-4609

**Bee Culture**

THE MAGAZINE OF AMERICAN BEEKEEPING



Don't Miss Even One Exciting Issue of *Bee Culture* Take Advantage of This Association Discount!

Magazine filled with everything you want to know about:

- Bees • Beekeeping • Beekeepers •
- How-To's • Honey Report • Profiles • Recipes •
- Funny Stories • Research • Something For Everybody •

Send check to: **Bee Culture Magazine**

623 W. Liberty, Medina, OH 44256 or call

800-289-7668, Ext. 3220 with credit card

## DRAPER'S SUPER BEE

914 S. Street

Auburn, NE 68305

Ph. (402) 274-3725

Fax: (402) 274-3128

Free delivery at the Missouri State Beekeepers Spring Meeting



## Bumblebee Colonies Afflicted by Small Hive Beetle

An abstract from the journal *Ecological Entomology*

Evidently the small hive beetle is an equal opportunity parasite. Its presence in bumblebee colonies was detailed in a recent issue of *Ecological Entomology*, a scientific journal published on behalf of the Royal Entomological Society in London.

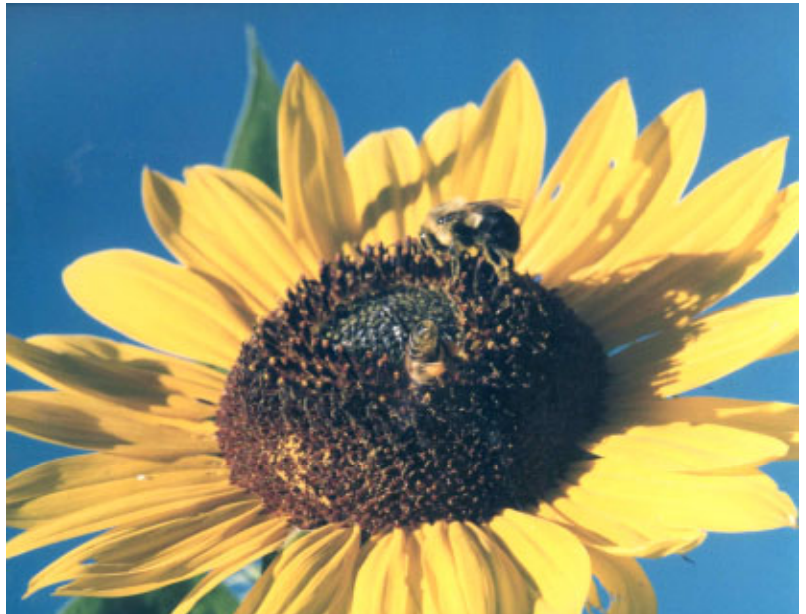
The following abstract is from the December 2006 issue (Volume 31, Issue 6, page 623):

### Infestation of commercial bumblebee (*Bombus impatiens*) field colonies by small hive beetles (*Aethina tumida*)

Authors: Sebastian Spiewok and Peter Neumann

#### Abstract:

1. The small hive beetle, *Aethina tumida*, is a parasite of honeybee (*Apis mellifera*) colonies native to sub-Saharan Africa and has become an invasive species. In North America the beetle is now sympatric with bumblebees, *Bombus*, not occurring in its native range. Laboratory studies have shown that small hive beetles can reproduce in bumblebee colonies but it was not known whether infestations occur in the field.
2. For the first time, infestation of bumblebee colonies by small hive beetles was investigated in the field. Commercial *Bombus impatiens* colonies (n=10) were installed in proximity to infested apiaries. Within eight weeks, all colonies that were alive in the five-week observation period (n=9) became naturally infested with adult small hive beetles and successful small hive beetle reproduction occurred in five colonies.
3. In four-square choice tests, the beetles were attracted to both adult bumblebee workers and pollen from bumblebee nests, suggesting that these odours may serve as cues for host finding.
4. The data indicate that bumblebee colonies may serve as alter-



**Sharing the harvest:** A bumblebee (*Bombus impatiens*) shares an autumn sunflower with its cousin the honeybee (*Apis mellifera*), here seen imbedded head-first in the center of the flower.

As it turns out, these two species share more than food sources. Like our honeybees, bumblebee colonies have recently been found to be afflicted by the small hive beetle (*Aethina tumida*).

photo by Eugene Makovec

native hosts for small hive beetles in the field. To foster the conservation of these essential native pollinators, investigations on the actual impact of small hive beetles on wild bumblebee populations are suggested.

## Help Needed to Preserve Earliest Issues of American Bee Journal

Volumes range from 1861 to 1880

**Editor's Note:** The following plea comes via the Bee-L internet beekeeping forum:

Fellow beekeepers --I need your help!

As you may know I have been working with the Cornell Library to get Books from the EF Phillips rare beekeeping book collection digitized for all beekeepers everywhere. If you have a computer and (fast) internet connection you can view these important volumes from early American beekeeping.

Our latest choice has been the first 20 volumes of American Bee Journal from the years 1861 through 1880. This would be an incredible new addition. I have had great assistance from the beekeeping community from across the U.S. This last effort has slowed and we are only halfway to our goal of \$3000 to complete this segment of digitization. I agree that it does seem expensive

but these items are very fragile and get the best of care while being scanned.

Our local club acknowledges our officers' efforts and past members by gifting to this cause. It is a gift that will be useful to beekeepers worldwide.

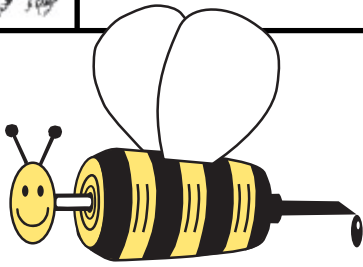
I was hoping that I could get each of you to bring this up at your state or local beekeeping meetings to see if we could get to this target!

If you have any questions see <http://bees.library.cornell.edu/> or ask me or the library.

Thanx,

Mike Griggs  
President, Fingerlakes Beekeepers  
Ithaca, NY





## Apitherapy News ... Now, A 'Sting Operation' on Multiple Sclerosis Patient

Express News Service  
<http://cities.expressindia.com>

### Vadodara, India — February 2, 2007

Vadodara-based Deepthi Waghela is more than happy to be stung by honeybees. The reason: This 40-year-old woman, who is suffering from multiple sclerosis, is undergoing Apitherapy, an ancient cure, which involves treating disorders with the help of bee venom. Helping her out is 49-year-old Reyah Carlson, an Apitherapy expert from the U.S., who has come all the way to Vadodara to treat Deepthi free of cost after the Waghelas contacted her through the internet.

Carlson, who herself was a multiple sclerosis patient, says she has used the therapy on herself, and has had positive results. She now runs an Apitherapy clinic in Missouri, U.S., and claims she has helped around 2000 other multiple sclerosis patients through the bee-bite treatment.

"If a bee-bite can help my wife who is suffering from multiple sclerosis, it's good news," says a happy Pradeepsinh Waghela, Deepthi's husband. "For nine years, we had tried a host of treatments to cure Deepthi but nothing worked much. In fact, my wife's condition worsened due to the progressive nature of the illness." He adds that they did not prefer to go in for chemotherapy because of its side-effects.

"Then my brother Yograjsinh mentioned Reyah Carlson. So I Googled for her and then got in touch with her," says Pradeep.

Carlson, who is in India for the first time, says, "Although there is no treatment for multiple sclerosis, Apitherapy has been successful in helping people with severe rheumatic diseases and is accepted in many countries, because its results are evident." Talking about her own experience, she adds, "I experimented on myself with the help of my husband and had honeybees stinging me 25,000 times in seven years." Her husband used to insert bee venom into her body-points affected by the disease. In fact, she says there is no spot on her body which had not been stung by honey bees.

A nurse by profession, Carlson did courses in Apitherapy from the Charles Mraz Therapy School in California. Apart from her clinic, she is also involved in manufacturing of api-products (honeybee products). Carlson has traveled the world over to acquaint people with the 'bee-sting' therapy. She laughs, "Just like bees, I was swarmed by television channels like Discovery, National Geographic as well as local journalists."

The apitherapist is in Vadodara for one more week and plans to teach Deepthi's husband the method of the therapy before she leaves.

Carlson says, "With a cocktail of medicinal agents, the 'bee-venom' therapy is the oldest form of acupuncture practiced by the Chinese and even Hippocrates to treat arthritis and gout." She says the venom contains melatin which is a hundred times more effective than cortisone, a steroid, which is believed to be harmful in the long run. Bee-venom also has anesthetic properties.

When asked what she felt about the treatment, Deepthi's tongue-in-cheek response was, "In six months, I can 'bee-healthy' and can 'bee-dazzle' people with its effects."

*Editor's Note: Reyah Carlson will be a guest speaker at the upcoming Spring Meeting of the Missouri State Beekeepers Association. She will also conduct a hands-on apitherapy session that will be open to the public.*

### WEAVER'S FAMOUS QUEENS

And Package Bees

**Buckfast & All-American**

OVER 118 YEARS OF SERVICE

THE R WEAVER APIARIES, INC.  
16495 C.R. 319, NAVASOTA, TX 77868  
PH: (936) 825-2333 EMAIL: [rweaver@tca.net](mailto:rweaver@tca.net)  
WEBSITE: [www.rweaver.com](http://www.rweaver.com)



6800 North Kircher Road  
Columbia MO. 65202-7652  
573-474-8837  
fax 573-474-5830  
[walkabot@midamerica.net](mailto:walkabot@midamerica.net)  
[www.walk-aboutacres.net](http://www.walk-aboutacres.net)

**Your local dealer for  
BEEKEEPING  
SUPPLIES**

*Make your visit a family outing! We  
have a "walk-about" farm,  
greenhouses and honey ice cream.*



## MSBA Spring 2007 Meeting Registration Form

NAME \_\_\_\_\_  
 ADDRESS \_\_\_\_\_  
 CITY \_\_\_\_\_ STATE \_\_\_\_\_ ZIP+4 \_\_\_\_\_  
 PHONE \_\_\_\_\_ E-MAIL \_\_\_\_\_



### Pre-Registration Fees: Registration must be received by March 7, 2007

Member – 2 day per person	\$20.00 _____
Member---1 day per person	\$15.00 _____
Member Family— 2 day	\$30.00 _____
Or Member family— 1 day	\$25.00 _____
Non-member – 2-day, per person	\$28.00 _____
Or Non-member – 1 day, per person	\$23.00 _____

### Registrations made after March 7, 2007:

Member -- 2-day, per person	\$25.00 _____
Or Member – 1 day, per person	\$20.00 _____
Non-member – 2-day, per person	\$35.00 _____
Or Non-member – 1 day, per person	\$30.00 _____

(No family discount on late registrations)

### Friday Night Banquet & Entertainment: To be announced

Adult - \$23.50 per person	(\$23.50 x _____)	=	_____
Child - \$12.00/child under 12	(\$12.00 x _____)	=	_____

### Saturday Lunch

Adult - \$15.00/person	(\$15.00 x _____)	=	_____
Child - \$7.50/child under 12	(\$ 7.50 x _____)	=	_____

Membership 2007 Missouri State Beekeepers Assn. Individual:	Renewal <input type="checkbox"/> New <input type="checkbox"/>	\$15.00 _____
Membership 2007 Missouri State Beekeepers Assn. Family:	Renewal <input type="checkbox"/> New <input type="checkbox"/>	\$20.00 _____

Queen fund donation Donation \$ \_\_\_\_\_

Meeting fund donation Donation \$ \_\_\_\_\_

**Total \$ \_\_\_\_\_**

Please make checks payable to: **MO State Beekeepers Assn** . Send to Sharon Gibbons, 314 Quinnmoor Drive. Ballwin, MO 63011. *If you pre-register and then cannot attend, your registration fee will be considered a donation and no refunds will be made. If you pay for meals and we are able to sell them you will be refunded for those.*



## Spring Meeting Program

### ***Thursday, March 15th***

8:00 p.m. Executive Board Meeting, Springfield Room

### ***Friday, March 16th***

8:00-8:45 Registration for early birds — Hall outside Carnegies Room

#### GROUP 1

(First 50 people)

Group Leader: Chris Gibbons

Meet in hotel lobby at 8:30 a.m.

Start for Capitol at 8:45

Tour begins at 9:00

#### GROUP 2

(Remainder of people)

Group Leader: Jann Amos

Meet in hotel lobby at 9:00 a.m.

Start for Capitol at 9:05

Tour begins at 9:20

## CAPITOL TOUR

**Join us for a special tour of our State Capitol including a walk up to the top of the Dome.** Then walk over to the Jefferson Landing Historical Site. This site is housed in the Lohman Building, one block east from the Capitol. The Lohman Building was built in 1839, and is significant as a rare surviving Missouri River landing. It houses exhibits on the city's history. You can then tour the Carnahan Memorial Garden, on your way to view the Governor's Mansion. Wear comfortable shoes! Our tour of the Governor's Mansion is scheduled for 11:00 am. I need to know how many people are planning on going on the tours. Please call me at 877-736-8607, or e-mail me at [sgibbs314@earthlink.net](mailto:sgibbs314@earthlink.net).

The Capitol Tour will take about one hour, and is given by the regular Capitol Tour guides. We then go to Senator Clemens' office at Room 418 Riverside. They will help us tour the dome. Senator Clemens is chairman of the Agriculture Committee and represents the Southwest part of the state. Unfortunately the last day for viewing our legislators in action is March 15<sup>th</sup>. They then leave for Easter recess. One word of caution: The dome tour is not for the faint-hearted. Most everyone can go to the Whispering Gallery, but it is a total of 250 steps to the dome. This dome tour is arranged for us by Senator Clemens' office and is not available to all tour groups. Please bring "thank-you" jars of honey as gifts.

10:30-12:00 Set-up for vendors in the Lincoln Ballroom

12:00-1:00 Registration open, Lincoln Room Lunch on your own

1:00-1:15 Welcome and announcements: **President Ken Norman**

1:15-2:00 "Varroa IPM: Does it work? Does it pay?" Dr. Keith Delaplane

2:00-2:30 "Introduction to Apitherapy for Beekeepers" Reyah Carlson

2:30-3:15 "Small Hive Beetle — How they will change the way we keep bees" Dr. Keith Delaplane

**Program continued next page**



## Spring Meeting Program (continued from Page 6)

- 3:15-3:30 Break and some door prizes
- 3:30-5:00 **“Beekeeping 101”**  
Move to the bee yard set up in nearby Jeff City Park. Maps available. **Bring protective gear.** If weather is bad, we will move the demonstration (without live bees) into our meeting room. Demo will include re-queening, making splits and nucs. For beginners: How to open and smoke the hive. How to tell if your bees are doing okay! How to feed, etc. Assembling equipment. Supering and honey removal techniques. We will be set up in work stations at the park. This will be run by experienced beekeepers, including Chris Gibbons, Jann Amos, Bob Wade and Robert Sperandio.
- 6:00 **Beekeeper of the Year Banquet** in the Carnegies Room:  
Special guest is Deputy Director of Agriculture **Matt Boatright**. He will speak about the future of Missouri Agriculture.
- 8:30 **“Beekeeping in Other Countries”** Dr. Keith Delaplane

### *Saturday, March 17th*

- 7:30-8:00 Registration — Hall outside Carnegies Room
- 8:00-8:15 Welcome & announcements
- 8:15-8:45 Greetings from Queen Chairperson **Cathy Hogan** and introduction of our 2007 Honey Queen **Lori Guthals**. Bring silent auction items as a donation to support the queen program.
- 8:45-9:45 **“Beekeeping 101: The Big 4 of Swarms: Prevention, Control, Capture and Calls”** Rev. Grant Gillard
- 9:45-10:05 **“Introducing Copper Gluconate to Your Feed for Varroa Control”** Andy Cutter of Jost Chemicals
- 10:05-10:30 Break — raffle prize drawing
- 10:30-11:30 **“Pollination: What do Varroa and All the Problems Have to Say About Pollination? Also an update on the new problem called Colony Collapse Disorder”** Dr. Keith Delaplane
- 11:30-12:00 **“Allergic Reactions to Insect Stings”** Dr. Wes Stricker
- 12:00-1:00 Lunch in the Carnegies Room
- 1:00-2:15 **Apitherapy Workshop** Reyah Carlson — Open to the public for a \$5.00 charge
- 2:15-2:45 **“Using Beeswax in Lotions and Creams”** Carol Wade
- 2:45-3:15 Break — end of silent auction — raffle prize drawing
- 3:15-4:15 Annual Business Meeting  
More door prizes

**Program and speakers subject to change**

### **Fall Meeting Preview**

The MSBA Fall Meeting will be held at the Quality Inn in Hannibal on November 2-3, 2007. The main speaker will be University of Delaware Entomologist Dewey Caron.



# The Proof Is in the Results!



Bees Abuzz Over New  
Pollen Substitute!

## Order Your Feed Bee® Now From Dadants

Honey bees around the world are feasting on a natural pollen substitute created by researchers at the University of Guelph. It's believed to be the first-ever pollen substitute scientifically formulated to meet bees' nutritional needs.

Environmental biologists Abdolreza Saffari and Prof. Peter Kevan designed the product to help keep bee colonies healthy and strong when natural food sources are scarce—a growing concern around the world amid environmental changes.

Studies published in the *American Bee Journal* and *Bee Culture* show that the product has the same nutritional value as pollen and is consumed by bees at the same rate. Colonies fed the substitute also produced twice as many bees and doubled honey production. In addition, field and research trials showed that, when given a choice, bees consumed Feed Bee® pollen substitute substantially quicker than other pollen substitute products.

## Control Varroa Mites Naturally With Apiguard®—Another "Bee Friendly" Product From Dadant!

Late summer or early fall is the best time to treat with Apiguard®.

Wake up to the natural efficacy of Apiguard®

A slow release thymol gel, a new and effective treatment for varroa mites.



Bulk tub comes complete with dosing scoop, spatula, and delivery pads.



Foil pack contains 10 individual 50g treatments ready for application.

Chico, CA	1-877-332-3268	New York	1-877-532-3268
Fresno, CA	1-877-532-3268	Texas	1-877-632-3268
Florida	1-877-832-3268	Virginia	1-800-220-8325
Illinois	1-888-922-1293	Wisconsin	1-877-232-3268*
Iowa	1-877-732-3268	*Note: The Wisconsin toll-free number will be answered at the Dadant Corporate Office in Hamilton, IL.	
Kentucky	1-888-932-3268		
Michigan	1-877-932-3268		

51 South 2nd St.  
Hamilton, IL 62341



Dadant

www.dadant.com  
dadant@dadant.com





## Beginning Beekeeping Class

### Midwestern Beekeepers Association

The Midwestern Beekeepers Association will hold its annual Basic Beekeeping Class on Saturday, March 24th. It will be held in Raytown, Missouri, at the YMCA at 10301 E. 350 Highway.

Registration begins at 8:45 with the program running from 9:15-4:30. The fee includes a notebook of information and a chance to win valuable door prizes (including a hive and bees).

The fee for non-members is \$25.00 and includes a one-year membership.

For more information call Glenn Davis at 816-690-8007 or Joli Winer at 913-768-8967. For a program and registration form please call or visit [www.mid-conagri.com](http://www.mid-conagri.com). We really appreciate those that pre-register so we have enough notebooks.

## Gasconade County Beekeepers

### New club forming in Owensville

Starting in March, there will be a club in Owensville to answer your questions regarding the fascinating world of beekeeping. Find out how to enjoy this amazing hobby.

Produce your own honey and beeswax.

Talk to experienced beekeepers about the many rewards of beekeeping.

There will also be a one-day beginner's beekeeping class offered in March with a one-year membership included.

Meetings will be held the second Monday of each month starting in March, at the Progressive Bank in Owensville.

For more information:  
573-764-2922  
[bee143@fidnet.com](mailto:bee143@fidnet.com)

## Local Honey Wanted

*The following query came to one of our members via email, and he passed it along to us:*

I was referred to you in reference to purchasing some honey. I use it for a sugar substitute so I don't need gallons of it but I would prefer getting the natural whole honey from the beekeeper and not the store.

If you do sell some to individuals please let me know the size you carry and the pricing please.

Rodger Myers South St. Louis Cell 314-596-6920

## Local Club Meeting Information

Jefferson County Beekeepers Association  
2<sup>nd</sup> Tuesday of each month, 7:30 p.m., Hwy B & 21  
Jefferson County Extension Center, Hillsboro  
Contact Scott Moser 636-285-7295

Midwestern Beekeepers Association  
Third Wednesday of each month 7:00 p.m.  
YMCA, 10301 E. 350 Hwy, Raytown  
Bob Justice, President, 816-358-3893

Eastern Missouri Beekeepers Association  
1<sup>st</sup> Thursday of each month at 7:30 p.m., Kirkwood  
Community Center, 111 Geyer Rd, Kirkwood  
Steve Harris, President 636-946-5520

Beekeeper's Association of the Ozarks  
4<sup>th</sup> Tuesday of each month, 7:00 p.m.  
The Library Center, 4653 S. Campbell, Springfield  
[www.ozarksbeekeepers.org](http://www.ozarksbeekeepers.org)

South Central Missouri Beekeepers Association  
May Schmitt, President 417-256-9447

Missouri Valley Beekeepers Association  
3<sup>rd</sup> Monday of each month, 7:00 p.m.  
Scenic Regional Library, Union  
Contact Rodney Angell 573-764-2922  
or [bee143@fidnet.com](mailto:bee143@fidnet.com)

Boone Regional Beekeepers Association  
3<sup>rd</sup> Sunday of every odd months, 1:00 p.m., University  
Outreach & Extension Office, Rt. UU, Columbia  
Contact Art Gelder 573-474-8837

Jackson Area Beekeepers  
4<sup>th</sup> Tuesday of each month, 7:00 p.m.  
First Pres. Church of Jackson, 206 E. Washington  
Contact Grant Gillard 573-243-6568  
or [gillard5@charter.net](mailto:gillard5@charter.net)

Southwest Beekeepers Association  
1<sup>st</sup> Tuesday of each month  
Neosho High School FFA Building  
Contact Herb Spencer 417-472-7743

Joplin Area Beekeepers  
Last Tuesday of each month, SW MO Bank Annex  
(7th and Duquesne)  
Contact Howard Thompson 417-781-0587

Parkland Beekeepers  
3<sup>rd</sup> Tuesday of each month, 108 Harrison  
Farmington, MO  
Contact Gene Wood 573-431-1436

Mid Missouri Beekeepers  
3<sup>rd</sup> Sunday of each month, Bank of Salem  
Salem, MO  
Mel Williams, President

Gasconade County Beekeepers Association  
2<sup>nd</sup> Sunday of month, Progressive Bank of Owensville  
Contact Rodney Angell 573-764-2922  
Or [bee143@fidnet.com](mailto:bee143@fidnet.com)

Is your club missing? Contact Eugene at  
[editor@mostatebeekeepersassociation.org](mailto:editor@mostatebeekeepersassociation.org)



## MSBA Membership Application

Name \_\_\_\_\_  
 Spouse's Name \_\_\_\_\_  
 Address \_\_\_\_\_  
 City/State/Zip \_\_\_\_\_  
 Phone Number \_\_\_\_\_ Email\* \_\_\_\_\_

\*Check here to receive your newsletter via email. This save us roughly \$10.00 per year in printing and mailing costs.

**NOTE: If you belong to a local association, please pay your state dues through your local club.**

**State Association Dues** (Check only one box)


Adult Membership \$15.00   
 Family Membership \$20.00   
 Student Membership \$5.00

**Amount Enclosed \$** \_\_\_\_\_

Make check payable to: Missouri State Beekeepers Association

Mail to: P.O. Box 448 Oak Grove, MO 64075

**Magazine Discounts:** Discounts are available for MSBA members to two beekeeping magazines. You may use their order forms and mail them yourself to the publishers as shown below:



### ASSOCIATION MEMBER SUBSCRIPTION

SAVE 25%

Association \_\_\_\_\_ Secretary's Name \_\_\_\_\_  
 Subscriber's Name \_\_\_\_\_ Address \_\_\_\_\_  
 Address \_\_\_\_\_ City \_\_\_\_\_  
 City \_\_\_\_\_ State, Zip \_\_\_\_\_  
 State, Zip \_\_\_\_\_ Comments \_\_\_\_\_

NEW     RENEWAL    U.S.     1 Yr. - \$18.70     2 Yr. - \$35.40     3 Yr. - \$49.80  
(PRICES GOOD THROUGH DEC. 31, 2007)    Foreign     1 Yr. - \$36.70     2 Yr. - \$71.40     3 Yr. - \$103.80

Return white copy to: American Bee Journal, 51 S. 2nd St., Hamilton, IL 62341    •    Retain yellow copy for your records.



### ASSOCIATION MEMBER SUBSCRIPTION

*Bee Culture Magazine*

Please Print Clearly

Association \_\_\_\_\_ Secretary's Name \_\_\_\_\_  
 Subscriber's Name \_\_\_\_\_ Address \_\_\_\_\_  
 Address \_\_\_\_\_ City \_\_\_\_\_  
 City \_\_\_\_\_ State, Zip \_\_\_\_\_  
 State, Zip \_\_\_\_\_ Comments \_\_\_\_\_  
 Phone # \_\_\_\_\_

NEW     RENEWAL     1 Yr. - \$19.00     2 Yr. - \$36.00

For Office Use Only  
 Acct. # \_\_\_\_\_  
 Canada - add \$15.00 per year  
 All other foreign add \$20/year

Return white copy to: Bee Culture, Subscription Dept., P.O. Box 706, Medina, OH 44258  
 \*Please discard any other forms. Use only this form.\* Prices subject to change without notice.



## Honey Queen Report

Lori Guthals

Hello, Beekeepers!

First of all, I cannot begin to say thank you enough times! I am so very excited to be serving as your 2007 Missouri Honey Queen! If being awarded the title of Missouri Honey Queen wasn't enough, having the opportunity to be crowned at the Governor's Conference on Agriculture in December was amazing! Everyone was very warm and welcoming towards me and, I can see this year's going to be just as great!

In case you didn't have the opportunity to attend the conference or meet me in person. I'd like to tell you a little more about myself. My name is Lori Guthals and I am a junior at the University of Missouri-Columbia. I am majoring in Agricultural Education-Leadership, with a minor in Animal Science. At the University I am very involved in Collegiate Cattlewomen, Block and Bridle, and Sigma Alpha Professional Sorority.

I was born and raised on a farm in Gower, Missouri. In my spare time, I love to show cattle, scrapbook, spend time with friends and family, and cook. I am the youngest of six children, with four sisters and one brother. Two of my older sisters, Wendy and Cheri, were past honey queens. Wendy competed at the national level and was also crowned National Honey Princess. Traveling alongside those two has greatly contributed to my passion for agriculture and desire to promote Missouri honey.

As this year's Honey Queen, I look forward to serving you! Wherever honey is being promoted, I look forward to being there! If you have a fair, festival, meeting or activity you would like me to attend, please contact Kathy Hogan, Queen Chairperson, and she will relay the message to me. Her address is shown in the column to the right, and on the association website.

Once again, I want to say thank you for this amazing opportunity! I anticipate an exciting year ahead and can't wait to get started!

Lori Guthals

### HIGH FRUCTOSE CORN SYRUP

**55% Fructose**

In 55-gallon drums or 5-gallon pails.

Andrew Honey Farm 217-938-4975

Near Hamilton, IL — or may be able to deliver at the Missouri State Beekeepers Spring Meeting

### Mid-Continent Agrimarketing, Inc.

1150 W. 151st St., Suite D

Olathe, KS 66061

(913) 768-8967 (Kansas City Area)

Toll-Free 1-800-547-1392

[www.mid-conagri.com](http://www.mid-conagri.com)

### Directory of Officers

President: Ken Norman 417-669-4452  
3634 Shiloh Church Road, Marionville, MO 65705  
[president@mostatebeekeepersassociation.org](mailto:president@mostatebeekeepersassociation.org)

Vice President: Scott Moser 636-285-7295  
6600 Davis Lane, Cedar Hill, MO 63016  
[vp@mostatebeekeepersassociation.org](mailto:vp@mostatebeekeepersassociation.org)

Secretary: Paul Harris 417-890-1008  
3876 South State Hwy J, Springfield, MO 65809  
[secretary@mostatebeekeepersassociation.org](mailto:secretary@mostatebeekeepersassociation.org)

Treasurer: Ron Vivian 816-690-7516  
443 Fricke Road, Bates City, MO 64011-8280  
[treasurer@mostatebeekeepersassociation.org](mailto:treasurer@mostatebeekeepersassociation.org)

Past-President: Monte Richardson 660-826-4917  
1405 S. Prospect Ave., Sedalia, MO 65301  
[pastpresident@mostatebeekeepersassociation.org](mailto:pastpresident@mostatebeekeepersassociation.org)

Western Area Director: Glenn Davis 816-690-8007  
4618 Highway Z, Bates City, MO 64011  
[westdirector@mostatebeekeepersassociation.org](mailto:westdirector@mostatebeekeepersassociation.org)

Southern Area Director: Marlin Trout 417-839-2992  
20445 Lawrence 2070, Ash Grove, MO 65604  
[southdirector@mostatebeekeepersassociation.org](mailto:southdirector@mostatebeekeepersassociation.org)

Eastern Area Director: Steve Harris 636-946-5520  
1224 Sherbrooke Road, St. Charles, MO 63303  
[eastdirector@mostatebeekeepersassociation.org](mailto:eastdirector@mostatebeekeepersassociation.org)

Southeastern Area Director: Ray Batton (573) 686-4888  
3032 N. 14th St., Poplar Bluff, MO 63901  
[northdirector@mostatebeekeepersassociation.org](mailto:northdirector@mostatebeekeepersassociation.org)

Program Chairperson: Sharon Gibbons 636-394-5395  
314 Quinmoo Dr., Ballwin, MO 63011  
[sgibbs314@earthlink.net](mailto:sgibbs314@earthlink.net)

Newsletter Editor: Eugene Makovec 314-965-4631  
643 Pearl Ave., Kirkwood, MO 63122  
[editor@mostatebeekeepersassociation.org](mailto:editor@mostatebeekeepersassociation.org)

Auxilliary Treasurer: Dolores Vivian 816-690-7516  
443 Fricke Road, Bates City, MO 64011-8280  
[H1ybee@aol.com](mailto:H1ybee@aol.com)

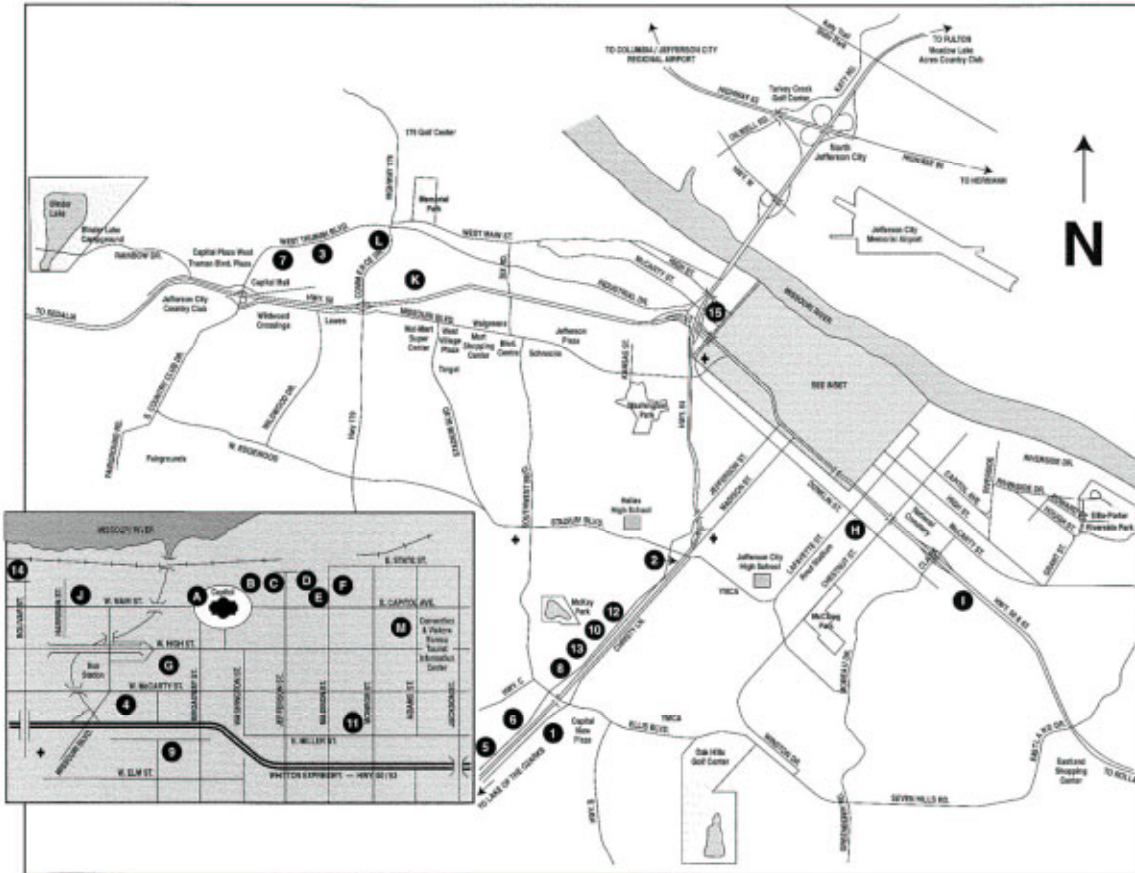
Queen Chairperson: Cathy Hogan  
P.O. Box 281, Boss, MO 65440 573-626-4493  
[queenchair@mostatebeekeepersassociation.org](mailto:queenchair@mostatebeekeepersassociation.org)

State Entomologist: Mike Brown  
P.O. Box 630, Jefferson City, MO 65102

Assist. Prof. Entomology/Extension Spec.:  
Dr. Richard Houseman  
1-87 Agricultural Building, University of Missouri-Columbia, Columbia, MO 65211



Missouri State Beekeepers Association  
P.O. Box 448 Oak Grove, MO 64075  
[www.mostatebeekeepers.org](http://www.mostatebeekeepers.org)



**Points of Interest**

- A. Missouri Capitol
- B. All Missouri Veterans Memorial
- C. Jefferson Landing State Historic Site
- D. Governor's Garden
- E. Governor's Mansion
- F. Cole County Historical Museum
- G. Harry S Truman State Office Building
- H. Lincoln University
- I. Missouri State Highway Patrol Safety Education Center
- J. Missouri State Information Center
- K. Missouri Veterinary Medical Foundation Museum
- L. Runge Nature Center
- M. Missouri River Regional Library

**Accommodations**

- 1. Best Western Capitol Inn
- 2. Budget Inn
- 3. Candlewood Suites
- 4. Capitol Plaza Hotel
- 5. Days Inn
- 6. Econo Lodge
- 7. Fairfield Inn by Marriott
- 8. Holiday Inn Express
- 9. Hotel DeVille
- 10. Motel 6
- 11. Hotel La Bella
- 12. Ramada Inn
- 13. Super 8

**Bed and Breakfast**

- 14. Cliff Manor
- 15. The Jefferson Inn

**Jefferson City Convention & Visitors Bureau**

213 Adams Street  
P.O. Box 2227  
Jefferson City, MO 65102  
(573) 632-2820  
[www.visitjeffersoncity.com](http://www.visitjeffersoncity.com)

This newsletter is published six times per year, on about the first of each odd month. Submissions are due three weeks prior to publication.

The email edition is in color, contains hyperlinks and bonus back-page material, while the print version is in black-and-white. If you are a member currently receiving the printed newsletter and you wish to upgrade, just send an email to [editor@mostatebeekeepersassociation.org](mailto:editor@mostatebeekeepersassociation.org) with "email newsletter" in the subject line. I'll reply with confirmation, and add you to my list.

**Advertising rates are as follows:**

Business card size	\$15.00	Half page	\$50.00
Quarter page	\$35.00	Full page	\$100.00

**Classified Ads:** Advertise one to three beekeeping-related items in a one-line ad at no charge. This service is for non-commercial MSBA members only, and is limited to one ad per item per calendar year.

**Honey Trading Post:** This is a free service to members wishing to buy or sell honey on a wholesale basis. Just email or call the editor with contact information and whether you are buying or selling. Pricing is between the interested parties.